



Lancaster  
University



2016 Postgraduate Prospectus

A  
**TOP 10 UK**  
UNIVERSITY

**TOP 1%**  
OF GLOBAL  
UNIVERSITIES

**1 HOUR FROM**  
MANCHESTER AND  
**2.5 HOURS FROM LONDON**

**BEST**  
STUDENT  
ACCOMMODATION

# Contents

Welcome to Lancaster – an international  
community of scholars

	Page
Why Lancaster?	04
Inspiring research and teaching	06
Your postgraduate career	08
Your postgraduate experience	12
Life at Lancaster	16
Recreation and culture on campus	18
Accommodation	20
Postgraduate study options	24
Supporting you	26
It's all on campus...	28
Finance and funding	30
Applying to Lancaster	32
Travel details	34
Contacts	36
Course listings	38
Postgraduate Open Day	47

# Why Lancaster?



## WE INVEST IN OUR CAMPUS

We have invested over £450m into our campus buildings and facilities in the last ten years with a further £135m planned for the next three years. This investment includes a new Engineering building, the refurbishment of the Library, Physics and Chemistry facilities and a £20m sports centre and sports facilities.



## WE'RE GREAT FOR NURTURING TALENT

Our commitment to Doctoral Training Centres represents a new approach to postgraduate study, attracting and nurturing talented and skilled researchers to secure the future supply of graduates in specific disciplinary areas.



## WE'RE GLOBAL

Lancaster has a huge number of teaching and research links around the world which provide exciting opportunities for students to study or work abroad. **There are strong links with universities in the US and China. Lancaster also operates in Ghana, India and Malaysia.**



## LANCASTER IS RANKED AMONG THE TOP 10 UNIVERSITIES IN THE UK

Lancaster is ranked 9th in the UK in The Complete University Guide 2016. There are more than 120 universities in the UK.



## WE'RE COLLEGIATE

Lancaster is one of a small number of leading UK universities to operate a college structure. All students (and staff) join one of our nine colleges – Bowland, Cartmel, County, Furness, Fylde, Grizedale, Lonsdale, Pendle and as a postgraduate student you will join our Graduate College. **Each college has its own history and traditions. This creates a more supportive student environment and more opportunities to get involved in activities.**



# Inspiring research and training

Our high quality research feeds into our high quality teaching. The results of the 2014 Research Excellence Framework (REF) confirmed Lancaster as a world-leading research university.

Lancaster has now emerged as the only one of the eight most research intensive universities in the North of England to have had funding increased because of the quality and volume of its research. However, it's not just league tables that confirm our standing, the projects that follow are testament to the passion for world changing research at the heart of Lancaster's ethos. They're also a taste of what's to come should you choose to study here.

## SCIENCE AND TECHNOLOGY

Our plant science is helping farmers across the globe grow crops in dry regions

The world's lowest temperatures have been achieved in our physics labs

We lead research into human impacts on the Amazon rainforest



## HEALTH AND MEDICINE

Lancaster research tackles Alzheimer's disease

Our research is improving end of life care for patients and family carers

Our research is helping to develop new drugs to combat schizophrenia, depression and bipolar disorder

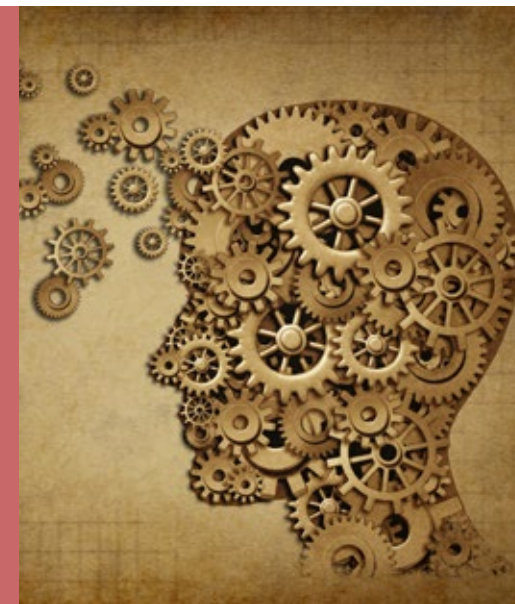


## ARTS AND SOCIAL SCIENCES

We are leading global research to make cities better places to live

Our linguists discovered speaking two languages changes the way we see the world

Our research is unlocking the digital communication of empathy

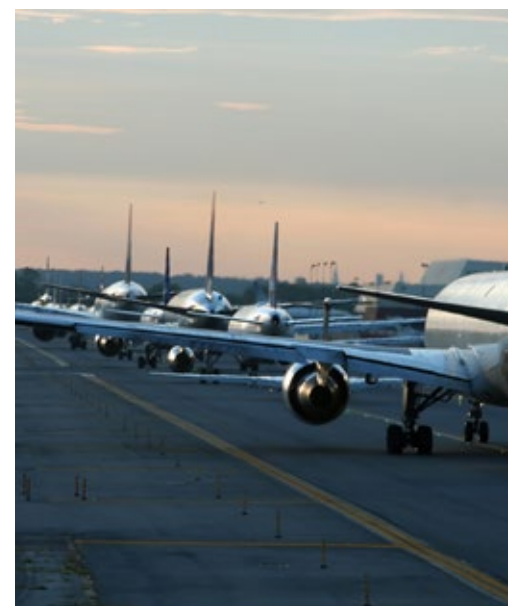


## MANAGEMENT

Our research showed London's congestion charge made roads safer

Our leading research helps family firms innovate, grow and succeed across generations

Our experts are using mathematical modelling to reduce airport congestion





# Your postgraduate career

Lancaster University is proud of its reputation for creating highly qualified, employable postgraduates. Our careers support will help you negotiate and succeed in an ever more complex and competitive job market.

Students and graduates of Lancaster University benefit from a Careers service which offers life-time support. For as long as you need it, help and support is available.



For more information visit:  
[www.lancaster.ac.uk/careers](http://www.lancaster.ac.uk/careers)



## Employers

We work with some of the top graduate recruiters and employers including the large corporate employers, the public sector, creative, charity and third sector employers – all of whom recognise and value the calibre of our postgraduates.

We offer a comprehensive events programme throughout the year, providing employers with multiple opportunities to engage with our students and graduates. This includes recruitment events, employer presentations, mentoring opportunities and networking events. You will therefore have plenty of opportunities to meet, learn and develop from a wide range of employers.

We also organise themed events based around our specialist subject areas such as Law, Engineering, Business, Media and the Arts, IT etc.

Student membership of the local Chamber of Commerce is now available, giving you the chance to engage and network with local businesses.

## Lancaster Award

The Lancaster Award recognises your extra-curricular achievements and demonstrates your skills to employers. You take the award alongside your postgraduate studies by completing activities in such areas as employability and career development; campus and community involvement and work experience.

This award complements your studies and helps evidence to employers the broad set of skills and competencies that you will have developed during your time at Lancaster University.

## Competitions

It is not just the Battle of the Roses and the sporting events that make Lancaster stand out.

Lancaster University runs one of the leading Business Challenge competitions within the UK, pitching student teams from different universities against each other over a two day event called FLUX. With past industry sponsors including BAE, Systems, Thales, KPMG, Costain, IBM, Deloitte and many others this is a good opportunity to stand out and show your potential – and win some money!

Each year we get involved with the Barclays Technology Challenge – another national event in which student teams get

to use their technical skills to solve a problem and secure the cash prize.

Learning can be fun and we will always look for opportunities where we can support personal and professional development through events such as these.

## Our digital services

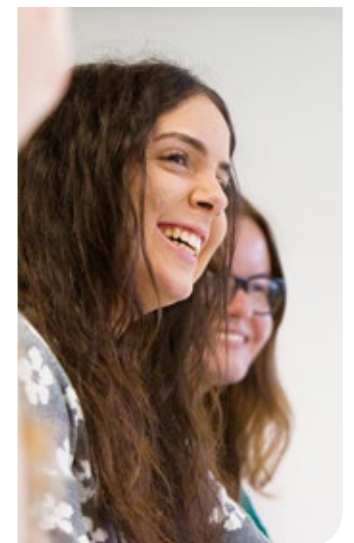
Students and graduates of the University have exclusive access to a comprehensive package of online products and services.

Our systems allow you to access information, videos, learning packages, psychometric tests and insights into some of the top employers and their recruitment and selection methods – all of which is available through our online Knowledge Bank.

You can view and book online to many of the events we promote, both on and off campus.

Careers appointments can be booked online or you can access an eGuidance service – which is available 24/7 from anywhere on the planet with an internet connection.

Register online with our on-campus recruitment agency, search for student and graduate jobs, access our digital library – all available at a time and place to suit you.





# Your postgraduate career



## Part-time work

Lancaster University has an on-campus recruitment agency. This service handles all of the part-time work opportunities offered by the University, ensuring that all students benefit from a single point of contact and fair access to the paid work that is available.

This service also works with local employers for both part-time and full-time positions. Students and graduates benefit from a dedicated University run service to help them find work during and after their studies.

Finding flexible part-time work whilst on campus, or on your vacation break, can provide you with excellent work experience as well as extra funds.

## Advice and guidance

All students have access to individual one-to-one support should they need it. Careers staff are available through regular drop-in sessions, bookable careers interviews, practice sessions for interviews and through our online eGuidance service.

If it is a question of decision-making in respect of career choice, gaining the experience that some employers may require or developing your application and interview skills in order to secure a job offer, our staff can help you to progress your career in whatever direction you wish to take it, be that academic or non-academic careers.

## Lifetime support

You probably will not need us after you graduate. The vast majority of our postgraduates gain employment or progress further in their studies. However, recognising the pace and frequency of change that can characterise many careers we provide all of our postgraduates with access to our services for as long as they need it.

The digital environment allows this offer to be fulfilled wherever you happen to live.

Our commitment to supporting your career progression is reflected in the positive outcomes that many of our postgraduates achieve.

For more information visit:  
[www.lancaster.ac.uk/careers](http://www.lancaster.ac.uk/careers)



## Recent graduate employers

BAE SYSTEMS

Microsoft

accenture

Deloitte.

IBM

Unilever

COSTAIN



## Part-time work

Our on-campus recruitment agency is positioning itself as the destination of choice for local employers seeking the talent that Lancaster students and graduates offer.

These opportunities give our students the chance to develop their professional skills and get paid alongside their studies.

EcoGuard produce nano-particle protective coatings and required a student to work part-time to help them develop their marketing strategy. EcoGuard commented: "The calibre of the students I saw was first rate and the service provided by the agency was second to none."

[www.lancaster.ac.uk/employment-and-recruitment-services](http://www.lancaster.ac.uk/employment-and-recruitment-services)

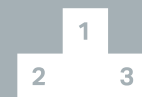


## Graduate support

We are not only committed to providing the best possible student experience, your graduate experience is equally important to us. That is why we offer ongoing careers support, for as long as you need it.

One of our recent graduates commented: "I've made it into my preferred career and into a great company. Using the Careers Service during my internship really helped me prepare for my two interviews for this job and helped me to secure my position at the company. I found the internship a great transition between university and working life and I'd like to thank all of the staff who supported me during the internship for helping me to get to where I am now."

[www.lancaster.ac.uk/careers/students-graduates/help-and-advice/support-for-graduates](http://www.lancaster.ac.uk/careers/students-graduates/help-and-advice/support-for-graduates)



## FLUX competition

Flux is one of the UK's largest inter-university business challenge competitions.

In addition to the other universities who are attracted to Lancaster to participate in this business challenge competition, we have some of the top graduate recruiters in the UK to help out. Companies such as BAE Systems, Thales, KPMG, Costain and others all recognise the talent spotting opportunity that this event provides. It takes you out of your comfort zone and you will be surprised what you can learn about yourself and what you can achieve in just two days.

"This competition was so much fun, a bit terrifying at the start, but it has made me realise just how much I can achieve" – student team member from FLUX 2014.

[www.lancaster.ac.uk/careers/students-graduates/help-and-advice/career-development/flux500](http://www.lancaster.ac.uk/careers/students-graduates/help-and-advice/career-development/flux500)



## Lancaster award

This innovative award scheme helps to ensure that you get noticed in the competitive graduate world. It is no walk in the park – you have to work hard to earn it.

Students gaining the award have commented: "it will make it easier to convince employers why I am the best candidate." Another felt that the award: "had made me a more employable graduate."

The figures speak for themselves, 86% of students undertaking the award gain graduate level positions on completion of their studies.

[www.lancaster.ac.uk/careers/students-graduates/lancaster-award](http://www.lancaster.ac.uk/careers/students-graduates/lancaster-award)

# Your postgraduate experience

The University provides an outstanding and welcoming postgraduate experience. The campus is located in a beautiful setting and our students have access to excellent facilities and equipment in support of their learning experience.



## Campus

Our campus has recently benefited from investment in new college, residential and social facilities, new and refurbished teaching spaces and new research facilities. Current redevelopment projects taking place across the campus include:

- The Library refurbishment project, which will increase usable technology and improve the ambience of the building, will be due for completion in 2016.
- Completion of a state-of-the-art building for the Engineering Department to replace existing facilities and to provide additional areas for future growth.
- A £26m investment to redevelop the Chemistry facilities, namely the Faraday Building due to be completed in 2016.
- Completion of a £4m refurbishment of some of the University's residential accommodation, Bowland Tower and the East and south wings.

We are committed to continued investment for the future to ensure we carry on exceeding the expectations of our students.

## The Graduate College

[www.lancaster.ac.uk/graduatecollege](http://www.lancaster.ac.uk/graduatecollege)

Lancaster University has a vibrant collegiate system of nine colleges. The Graduate College comprises more than 2,000 postgraduate students and provides a range of services to support you during your time at Lancaster, including affordable accommodation, social and study facilities (common room with kitchen, games room, TV room/group study room and computer lab), and its own dedicated award-winning bar (The Herdwick).

The Postgraduate Board acts as the main body for the University's postgraduate students. College members are invited to stand for the board, which is elected annually.

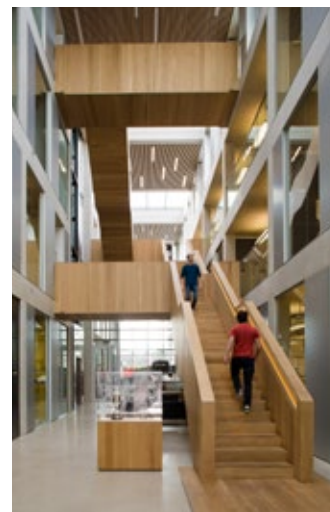
The Graduate College's friendly, international community celebrates and encourages diversity and provides members with an ideal opportunity to broaden their horizons and make lasting friendships. It also provides an unrivalled environment for members to develop academically, and the extra-curricular activities and opportunities provided ensure that each postgraduate student's experience is rewarding.



### What they say...

"Graduate College is a global community attracting diverse members from all corners of the world."

**Ghayas Chowdhary,  
Graduate College**



## IT facilities

[www.lancaster.ac.uk/iss](http://www.lancaster.ac.uk/iss)

Whatever your area of study or research, whatever you're aiming to achieve, we aim to provide you with the IT facilities and support to help you get there.

As a postgraduate at Lancaster you will have access to:

- Wi-Fi in accommodation on campus as well as in many social and learning spaces
- A high bandwidth wired connection to the IT network and Internet in rooms on campus
- University email, including access to calendars and the University address book
- Secure personal storage space for your work on the University network and in the cloud
- Online collaboration spaces for joint research work
- A wide range of academic, business and accessibility software, with many applications available to use on your own PC
- Personalised online learning spaces to submit assignments, view lecture recordings, access interactive reading lists, and more

- The Student Portal, a gateway to your online learning spaces, timetable, online student record and library resources
- PCs, scanners and printers located across campus in the Library, PC labs, departments and your college, with many accessible 24/7
- A laptop loan service, so you don't always have to carry your own
- The iLancaster mobile app, providing access to services including your timetable, bus timetables, building locations on campus and sports centre bookings
- Group and individual learning spaces in the Learning Zone and Library
- IT support and assistance from the ISS Service Desk and access to free online or face-to-face IT training
- PC support at 'The Workshop', a campus-based service providing cost-effective support if your laptop, PC or Mac breaks.



### What they say...

"The stimulating research environment at Lancaster has offered me the opportunity to develop new abilities and meet people from different cultures and intellectual backgrounds."

**Caroline Biron,  
Management PhD**



# Your postgraduate experience



## The Library

[www.lancaster.ac.uk/library](http://www.lancaster.ac.uk/library)

Our Library offers you access to more than 30,000 e-journals, 300,000 e-books plus a wide range of other electronic and physical resources. Our discovery service, OneSearch ([onesearch.lancs.ac.uk](http://onesearch.lancs.ac.uk)) will help direct you to the materials you need, and online guidance is available from our web pages to help you with specific services, collections and information resources ([lancaster.libguides.com](http://lancaster.libguides.com)).

The Library building has recently undergone a full refurbishment, which has delivered a unique study space with more than 1,200 technology-enabled workspaces, including 30 group study rooms, training rooms and a dedicated postgraduate study area.

## The Ruskin Library

[www.lancaster.ac.uk/ruskin](http://www.lancaster.ac.uk/ruskin)

The Ruskin Library houses the foremost collection of the nineteenth century's most famous English critic of art, architecture and society – John Ruskin (1819–1900). The main holding of the Ruskin Library is the Whitehouse Collection of material relating to John Ruskin and his circle. The Collection, which belongs to Education Trust Ltd, is in the care of the Ruskin Foundation, based at Lancaster University. The Foundation also manages Brantwood, Ruskin's home on the eastern shore of Coniston Water.

In the public galleries we display changing selections from over 2,000 drawings, of which 1,000 are by Ruskin. Others are by his friends and associates, including Samuel Prout, Edward Burne-Jones and Francesca Alexander. We also regularly exhibit work by contemporary artists inspired by Ruskin. Electronic and digitised resources include the Library Edition of Ruskin's Works as well as Ruskin's diaries, Venetian Notebooks and other manuscripts.

## Student Portal and online learning

[www.lancaster.ac.uk/portal](http://www.lancaster.ac.uk/portal)

The Student Portal gives you access to your email, timetable, notes and much more. You can even check when your library books are due back or sign up for learning activities.

One of the useful things you will find on the portal is a list of your taught or research training modules and access to related online resources.

Your interactions with the portal will differ according to your tutor's preferences but it will usually include library resource lists, video and audio materials, discussion boards, and collaborative activities.

## City centre study space

[www.thestorey.co.uk](http://www.thestorey.co.uk)

Postgraduate students have access to a dedicated Study Hub located at the Storey Institute in the centre of Lancaster.

The convenient town centre facility is available to all Lancaster University students and has two rooms – a quiet study area and a group space with a large monitor. It has capacity for up to 46 people, access to the University's eduroam Wi-Fi and is open six days a week.

## Alumni network

[www.lancaster.ac.uk/alumni](http://www.lancaster.ac.uk/alumni)

You can take advantage of the alumni network for professional and social networking during your time as a student and beyond. With over 130,000 graduates in more than 170 countries worldwide you'll find an active alumni network across the globe.

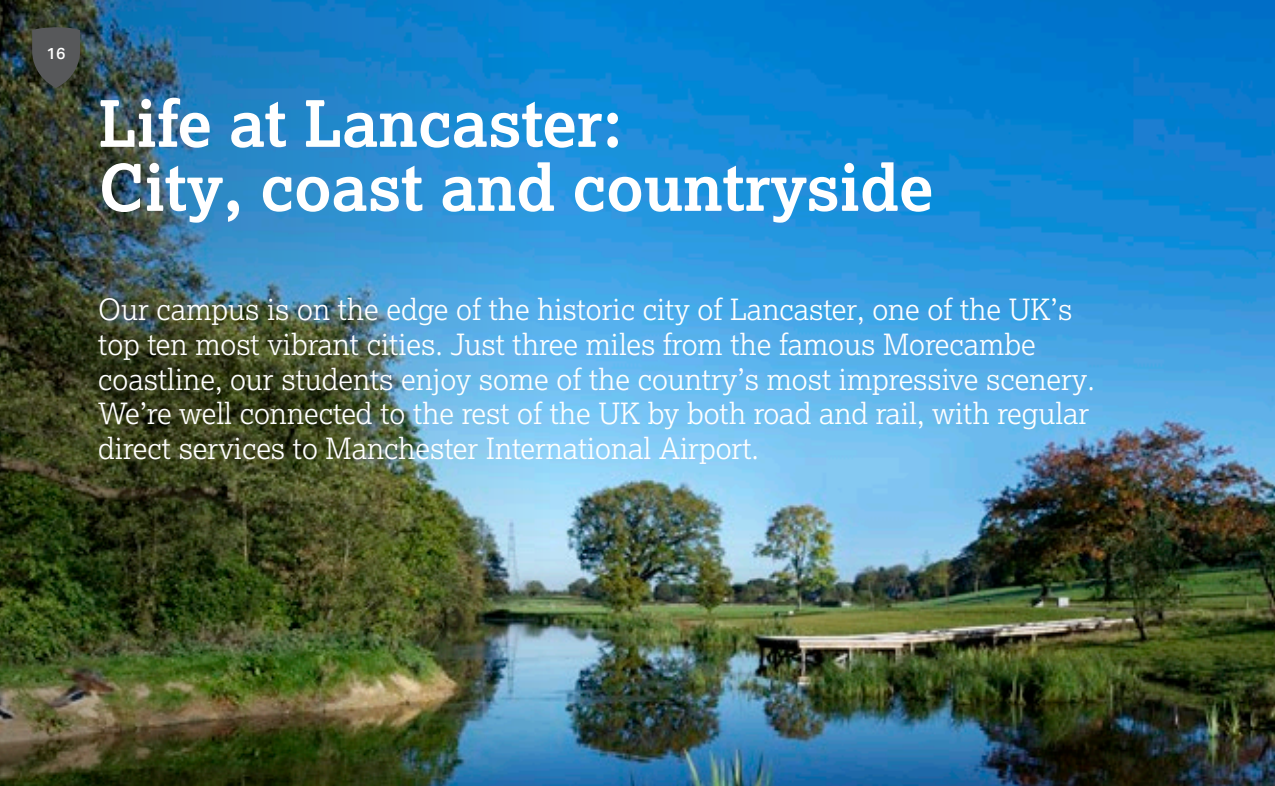
Find out more online – we're on the main website and you'll find us on LinkedIn ([linkd.in/LancasterUni](https://www.linkedin.com/company/lancasteruni)) and Facebook ([facebook.com/LancasterUniversityAlumni](https://www.facebook.com/LancasterUniversityAlumni)).





# Life at Lancaster: City, coast and countryside

Our campus is on the edge of the historic city of Lancaster, one of the UK's top ten most vibrant cities. Just three miles from the famous Morecambe coastline, our students enjoy some of the country's most impressive scenery. We're well connected to the rest of the UK by both road and rail, with regular direct services to Manchester International Airport.



## DID YOU KNOW?



30 MINUTES  
FROM THE LAKE  
DISTRICT

1 HOUR FROM  
MANCHESTER

2.5 HOURS  
FROM LONDON

## History

The city has a rich history and there are plenty of opportunities to explore its cobbled streets, museums, quirky outdoor spaces and landmarks.

- The superbly well-preserved 12th century castle in the city centre is open to the public
- The striking Ashton Memorial folly looks out over the city
- Williamson Park, a beautiful green space and woodland, is home to a Butterfly House

Lancaster's history is one of witchcraft, revolution and hard graft all of which makes for a fascinating and attractive place to live and study.

## Shopping

Lancaster is a great place to shop, with all the high street names you'd expect next to an eclectic mix of independent shops and boutiques.

- The historic Charter Market features more than 40 stalls every Wednesday and Saturday

- The Assembly Rooms vintage market sells everything from clothes to comic books
- The Atkinson's coffee 'boutique', and many other popular cafés and bars can be found in the city

## Arts and culture

Recognised for entertainment, Lancaster has theatres, cinemas and other venues holding arts events.

- Major comedy tours
- Open-air theatre
- Live music in venues across the city
- Annual music and arts festivals

## Nightlife

There's an abundance of both traditional pubs and wine bars within Lancaster, situated along the banks of the canal, through the streets and even underneath the city in the castle's former wine cellars. The Students' Union own and run the 'Sugarhouse' club in the city centre.

- The Sugarhouse nightclub is open exclusively to students

- It is the largest nightclub in Lancaster
- Offers free return buses to campus
- Guarantees a safe and fun night

## Beyond the city

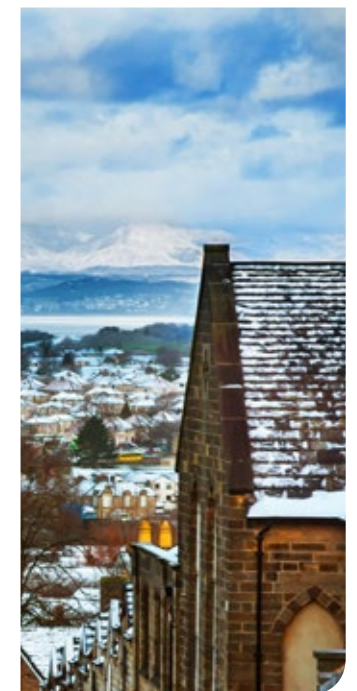
Lancaster is situated a few miles from the famous Morecambe coastline, with its sweeping estuary and dramatic sunsets, and only half an hour from the stunning scenery of the Lake District. Walking and cycling are great ways to explore, or you can catch a ride on a barge on the Lancaster Canal and discover the countryside whilst enjoying a Lancashire hotpot lunch!

Find out more about our city and view our image gallery at [www.lancaster.ac.uk/city](http://www.lancaster.ac.uk/city)



## A perfect location

Lancaster is situated between two of England's most famous visitor destinations, the Lake District to the north and Blackpool, the UK's biggest holiday town, to the south. To the west lies the beautiful Lune estuary and Morecambe Bay and to the east the dramatic moorland of Bowland Forest.





# Recreation and culture on campus



## Sport Lancaster

[www.lancaster.ac.uk/sportscentre](http://www.lancaster.ac.uk/sportscentre)

Sport Lancaster accommodates competitive sport, recreational sport and supports the health and wellbeing agenda. In addition to the timetabled classes at the Sports Centre, free sessions are offered throughout the term to ensure users have the opportunity to try new activities and promote both physical and mental wellbeing.

Opened in 2011, the Sports Centre has an eight lane, 25m swimming pool with the latest touch pad timing equipment, as well as a fitness suite, featuring a split-level 100-station gym with an extensive range of cardiovascular and resistance machines and free weights, all supervised by a dedicated personal training team.

The 8.5m climbing wall, featuring 17 belay lines and a bouldering cave, was designed with input from renowned mountaineer Sir Chris Bonington. The sports hall has been designed to accommodate a variety of different sports in one space; from all traditional indoor sports to activities such as trampolining. Martial arts, spinning, dance, Pilates and yoga classes all take place in the Studio.

Other facilities include a sauna and steam room, four glass squash courts, a meeting room, a physio/sports injuries clinic, changing rooms for indoor and outdoor activities, extensive grass pitches for rugby and football, eight tennis courts, five netball courts, three artificial pitches, two multi-use games areas, and a woodland walk and trim trail.

## Lancaster Arts at Lancaster University

Lancaster Arts at Lancaster University is your arts organisation based on campus.

With an accredited art collection based at the Peter Scott Gallery and performances and concerts on campus, across Lancaster city centre and beyond – Lancaster Arts provides Lancaster's students with opportunities to enjoy inspiring events across the performing and visual arts.

We are the only combined arts programme that is part of a University in the North to have Arts Council England 'National Portfolio' status. We present an exciting programme of events, concerts and exhibitions throughout the year – for students, staff and the public - with a particular focus on the Michaelmas and Lent terms.

We keep prices low for students and offer discount packages such as our Student Supporter membership. In 2015-16 membership grants free entry to ticketed performances and events across the year for an annual fee.

For further information and listings and to book tickets online please visit at [www.lancasterarts.org](http://www.lancasterarts.org)



On campus Lancaster Arts presentations are frequently made at the following venues:

### Peter Scott Gallery

A central hub for visual arts at the northern end of campus within the Great Hall complex. Lancaster Arts hosts a variety of touring exhibitions and houses the Peter Scott art collection, which includes prints from important 20th Century artists such as Miro and Picasso, Chinese and Japanese antiquities and arts and crafts era ceramics. LICA's Fine Art undergraduate degree show is also exhibited here.

### Concert Series

For over 45 years Lancaster has presented high quality classical music concerts in the Great Hall featuring soloists, composers and players of significant national and international standing. Our Lancaster Arts Concert Series is the easiest way in the district to experience the very best in classical music.

### Nuffield Theatre

The Nuffield Theatre is a unique venue for Lancaster Arts' professional development opportunities and in-term presentations by acclaimed contemporary theatre, dance, music, performance and live art practitioners from the UK and abroad. It is 'the place [in England] to see the most innovative new work' according to The Guardian newspaper. Book your ticket and brag you 'saw it here first!'

## The Students' Union

We look after all of the societies and sports clubs on campus as well as putting on big events like Roses and Grad Ball. We run at least one big on-campus event each term, helping to make the campus an exciting and welcoming place to live, work and study.

### LUSU sports

[www.lusu.co.uk/get-involved/sport](http://www.lusu.co.uk/get-involved/sport)

Our LUSU sports clubs compete in the British Universities and Colleges Sports (BUCS) leagues, competitions and tournaments. We have over 35 sports clubs ranging from American Football to Korfbal as well as the staples of rugby, netball, football and hockey, who all compete against other institutions regularly.

The 'Roses' weekend, a varsity tournament pitting Lancaster University against rivals York University, is an annual highlight of the inter college sports calendar. There are also plenty of weekend opportunities to play sport.

LUSU also runs Just Play with support from Sport England, allowing you to just turn up and have a go at 18 different sports for just £1 per session. Just Play allows you to try new activities, get fit and meet new people in a friendly environment.

### Take 2 Cinema

[www.cinema.lusu.co.uk](http://www.cinema.lusu.co.uk)

Lancaster University is one of the few universities with its own student 3D cinema located on campus. The best-equipped student cinema in the country, it shows a broad range of movies from recently released blockbusters through to world cinema films and old classics. Run by the LU Film Society, the cinema shows films five nights each week, during term time, at affordable prices.

### Societies

[www.lusu.co.uk/get-involved/societies](http://www.lusu.co.uk/get-involved/societies)

Nearly half of our students are members of one of our various student groups. There are now more than 230 LUSU affiliated societies (around 30 international groups). They exist to support the interests and hobbies of students. Societies are available to join all year round, with more groups forming on a weekly basis. If we don't currently offer a society you're interested in, it's very easy to set one up. They are a great way to make friends and get involved.





# Accommodation

Graduate College is situated at the south end of our campus on Alexandra Park, and many postgraduates choose to live in the variety of accommodation we have on offer. Lancaster University retained the prestigious title of 'Best University Halls' in the UK National Student Housing Survey for the sixth year in 2015, and we are one of only 11 providers to hold the International Accommodation Quality Mark, awarded where satisfaction among International students exceeds 90%.



## Checklist

- ✓ All rooms are self-catered, single bedrooms with study space
- ✓ All rooms have Wi-Fi and wired data points for access to email, Internet and the campus network
- ✓ Most rooms are ensuite, with private shower and toilet facilities
- ✓ Shared kitchen facilities include cooker, microwave, fridge and freezer
- ✓ Campus has shops, eateries, social facilities and laundrettes

Most bedrooms in Graduate College are ensuite with between four and nine students sharing the kitchen facilities. There are also some self-contained studios with a larger bed, small kitchen and dining area available also.

Specifically adapted accommodation is available to students with disabilities, including ground floor rooms for wheelchair users or students with restricted mobility. Please specify your needs when applying.

### Accommodation guarantees

If you are a full-time postgraduate student from outside of the EU you are guaranteed a single room on campus for your first year of study. To take advantage of this you must submit an online application by 15 August (having already sent firm acceptance of a place on a full-time course of nine months or more, beginning in September or October).

EU students receive the same guarantee where an application is submitted by 1 August.

### Families and couples

The campus has a limited number of self-contained, furnished family flats ranging from one to four bedrooms. We can only offer a guarantee for single person accommodation, but if we aren't able to offer you family accommodation that suits your needs we can help you to find suitable alternatives via the Lancaster University Homes scheme.



## Award-winning accommodation

Lancaster has retained the title of 'Best University Halls' for the sixth year running in the 2015 National Student Housing Survey. Our accommodation was also voted 'Best Moving In Experience' in the 2015 survey.



## Letting periods and residence charges

Rooms are let on a 50 week basis (late September – September) or a 40 week basis (late September – July). Payment is termly, in advance, by invoice.

2015 - 2016 weekly rents including heating, lighting, water, network connection and cleaning (townhouses and studios do not have a cleaning service):

Residence	Price
Standard with washbasin	£103.25
Standard townhouse room	£115.50
En suite	£122.85
Superior en suite	£126.00
Single studios	£150.15
Double studios	£168.70

## Applying for campus accommodation

We'll send you details about the application process once you confirm acceptance of our study offer (from April onwards). Applications for rooms in Graduate College or Family Flats are taken online, and you will subsequently be sent an offer by email and will need to pay a refundable accommodation deposit of £200.00 for a single study room, or £275.00 for a family flat. Deposits are paid online by credit card.

### Graduate college

Graduate College  
Lancaster University  
Lancaster LA2 0PF  
Email: [gcro@lancaster.ac.uk](mailto:gcro@lancaster.ac.uk)  
Tel: +44 (0)1524 593342

### Campus flat enquiries

The Flats Administration Officer  
Accommodation Office  
University House  
Lancaster University  
Lancaster LA1 4YW  
Email: [flats@lancaster.ac.uk](mailto:flats@lancaster.ac.uk)  
Tel: +44 (0)1524 593554



# Accommodation



## Lancaster University Homes

If you are looking to rent in the city centre you can find help and advice, as well as a searchable list of properties, on the Lancaster University Homes website.

Lancaster University Homes is the University's approval scheme for houses, flats and halls of residence in the city and surrounding area, and you can be assured that all properties listed have been inspected by our staff and meet our guidelines. We also make sure that they comply with all legislation, have the relevant safety certificates, and that the landlord is fit and proper.

Be sure to start your search at [www.lancasteruniversityhomes.co.uk](http://www.lancasteruniversityhomes.co.uk)



## LUSU Living

LUSU Living is our Students' Union dedicated housing service for postgraduates wanting to live off campus; we offer a range of good quality houses, flats and studio apartments throughout south Lancaster for individual students and students with families.

Our postgraduate housing options are released immediately after Easter, which means you can start looking for a property as and when it's convenient.

We manage 250 properties throughout Lancaster, making us the city's largest landlord, and you can apply by visiting our offices on-campus and in the city centre, emailing us, or completing our online registration form.

All of our LUSU Living properties are accredited through Lancaster University and licensed through Lancaster City Council (where appropriate) and benefit from a comprehensive repairs service, homecare cover for our boilers and an emergency out of hours service.

### Shared houses (approx £88/week/student)

Shared houses typically have a shared lounge and bathroom facilities, and a private bedroom. All our shared household rents include utilities, wireless broadband, personal contents insurance, a TV licence, a regular cleaning service and are let on a standard 50-week fixed term lease. We have some great shared houses which offer real value for money.

### Modern shared flats (approx £100/week/student)

LUSU Living also manage shared flats, such as the luxury two bed flats in Lancaster's Kingsway development. These usually have en suite facilities and rent includes utilities, broadband and contents insurance.

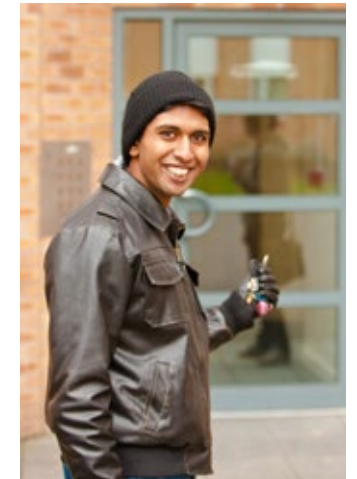
### Small houses/flats (approx £115 - £135 per property/per week)

Our affordable self-contained properties for couples/families have one, two or three bedrooms. Rents typically include water charges, contents insurance and any service charges, but exclude all other utilities and taxes, although we can provide broadband at an extra cost if required.

LUSU Living exclusively manages Damside – Lancaster's newest boutique studio apartments. This innovative development combines comfortable private apartments with top-quality shared kitchens and communal spaces to create a welcoming student community in the heart of the city.

### Off-campus accommodation enquiries

Bowland College  
Lancaster University  
Lancaster LA1 4YT  
Tel: +44 (0)1524 592170  
Email: [lusu.living@lancaster.ac.uk](mailto:lusu.living@lancaster.ac.uk)  
[www.lusu.co.uk/living](http://www.lusu.co.uk/living)



## Family life

Our campus enjoys a strong community of postgraduate students with young families and a host of support services are available.

You can find out more about the support and services available for students moving to Lancaster with their families at

[www.lancaster.ac.uk/students-with-families](http://www.lancaster.ac.uk/students-with-families)





# Postgraduate study options

At Lancaster we offer a wide range of both taught and research degrees designed to broaden your experiences and improve your career prospects.



## Research degrees

Our postgraduate students are an important part of our research culture and make up a third of our student population. We have a range of research options at Lancaster including:

### Doctor of Philosophy (PhD)

Taking between three to four years to complete, most doctoral students at Lancaster work on a traditional PhD by Research. This includes research training and an emphasis on conducting original research leading to a written thesis.

It is also possible to conduct original research and produce a series of peer refereed academic papers for publication, rather than a thesis. This leads to the degree of PhD by Alternative Format.

Some of our PhD programmes also have variants that make them particularly suitable for part-time study.

### Master of Philosophy (MPhil)

An MPhil normally takes two years of full-time study, with an emphasis on conducting original research and writing up a research project that is of similar quality but smaller in size and scope than a PhD thesis.

### Professional Doctorates

We offer two types of professional doctorates: Doctor of Medicine (MD), taking two years to complete and the Doctor of Clinical Psychology which takes three years to complete.

## Integrated degrees (1+3)

Several of our courses offer students the option to take a bridging approach to postgraduate study. Known as Integrated Degrees, or 1+3, they can be followed at Masters level before progressing directly to PhD level.

Although there is a taught component to these courses, they are ideal for anyone who already has a clear idea of the field they would like to research and they are assessed primarily by dissertation.

## Taught degrees

Our taught postgraduate degrees normally involve a combination of taught modules, course work and a research dissertation. Some programmes may enable you to carry out a real life research project for a company or organisation in place of a dissertation.

While most taught programmes enable you to build upon your undergraduate studies some academic programmes are open to students with little or no prior academic experience in the subject.

## Doctoral Training Centres

Doctoral Training Centres aim to attract and nurture talented and skilled researchers to secure the future supply of graduates in specific disciplinary areas.

Students based in Doctoral Training Centres carry out a research project at PhD level together with taught coursework in a supportive and exciting environment.

There are real benefits to undertaking a PhD through a Doctoral Training Centre:

- An innovative, exciting and vibrant four year training programme developed to produce high quality researchers
- A funded scheme with substantial Government and industry backing providing a large number of studentships with greatly enhanced stipends
- The integral involvement of leading industry partners in both training and research
- A great student experience from training as part of a group, cooperating and interacting with like-minded peers
- Researching important cross-disciplinary problems to ensure that your research makes an impact
- The development of skills and experiences, which are required for a rapid career progression
- An environment in which students can access the best specialist research across all universities within the consortium



The following doctoral research centres offer studentships at Lancaster:

## North West Doctoral Training Centre (NWDTC)

[www.nwdtc.ac.uk](http://www.nwdtc.ac.uk)

The NWDTC, a collaboration between the Universities of Lancaster, Liverpool and Manchester, was created by the Economic and Social Research Council (ESRC) and is the largest Doctoral Training Centre in England for postgraduate social science training.

## HighWire

[www.highwire.lancaster.ac.uk](http://www.highwire.lancaster.ac.uk)

HighWire is a world class, cross-disciplinary and user-centric initiative with innovation at the heart of its curriculum and ethos. Seeking a creative fusion between computer science, management and design, it aims to produce a new breed of innovative people who understand and are able to advance the state of the art in technical, design and business innovation.

## STOR-i

[www.stor-i.lancs.ac.uk](http://www.stor-i.lancs.ac.uk)

STOR-i aims to grow the national research base in Statistics and Operational Research, two areas which are fundamental to today's data-driven decision making processes.

Based at Lancaster University, STOR-i's unique training programme will develop a new generation of researcher capable of making a real impact in academic, scientific and industrial fields.

## NOWNANO

[www.lancaster.ac.uk/nownano](http://www.lancaster.ac.uk/nownano)

Lancaster University is an active partner in the North West Nanoscience (NOWNANO) Doctoral Training Centre within Lancaster and Manchester Universities to offer a broad interdisciplinary Doctoral Training Centre. PhD students receive initial training to outline the breadth and potential of nanoscience, before they focus on mastering one specific area of the subject.

## BBSRC Doctoral Training Partnership in Food Security

[www.bbsrc.ac.uk](http://www.bbsrc.ac.uk)

The BBSRC is a doctoral training partnership between the Universities of Reading, Southampton, Lancaster and Surrey, and Rothamsted Research.

The centre is funded by the Biotechnology and Biological Sciences Research Council, and offers studentships in the area of food security.

## AHRC North West Consortium

[www.ahrc.ac.uk](http://www.ahrc.ac.uk)

In collaboration with the Arts and Humanities Research Council (AHRC), Lancaster University is working with other academic institutions in the north west of England to seek out and nurture outstanding postgraduate research students and provide world-class training in the arts and humanities.

## Centre for Global Eco-Innovation

[www.cgeinnovation.org](http://www.cgeinnovation.org)

The Centre for Global Eco-Innovation is the only centre of its kind in Europe and is part financed by the European Regional Development Fund. It brings together the expertise, resources and global contacts of Lancaster University and the University of Liverpool, together with international commercialisation consultancy Inventory.

## Envision

[www.envision-dtp.org](http://www.envision-dtp.org)

Funded by the Natural Environment Research Council (NERC), Lancaster University is leading the initiative which brings together the Universities of Nottingham and Bangor, the Centre for Ecology and Hydrology, the British Geological Survey and Rothamsted Research. The initiative also involves large multinationals, a large number of SMEs and international research centres.



# Supporting you

The University supports every student in making the most of their education and life at Lancaster. We offer a range of services that are free and easy to access throughout your time here.



## Student Based Services

[www.lancaster.ac.uk/student-based-services/](http://www.lancaster.ac.uk/student-based-services/)

Student Based Services provides easy access to support that enhances your postgraduate experience.

We work closely with colleagues across the University to provide advice and guidance on a range of academic and non-academic issues from welfare to funding, health to accommodation. All services are available via The Base, our one stop enquiry desk at the front of University House, where friendly staff will do their best to help you or arrange an appointment with a specialist adviser.

## Counselling and mental health

[www.lancaster.ac.uk/sbs/counselling](http://www.lancaster.ac.uk/sbs/counselling)

Our private and confidential service covers all aspects of mental health and wellbeing.

## Disability

[www.lancaster.ac.uk/sbs/disabilities](http://www.lancaster.ac.uk/sbs/disabilities)

Support is available on disability issues relating to all aspects of living and learning at Lancaster, including assessment and support for dyslexia, assessments for study aids, funding applications and social care support.

## Funding

[www.lancaster.ac.uk/sbs/funding](http://www.lancaster.ac.uk/sbs/funding)

We can provide information, advice and guidance on student funding and financial aid, including help with Government and University funding, administration of financial aid schemes, guidance on living costs, and help with budgeting.

## Health services

[www.lancaster.ac.uk/health-services](http://www.lancaster.ac.uk/health-services)  
[www.naturalhealthcare.org.uk](http://www.naturalhealthcare.org.uk)

All students must register with the Bailrigg Health Centre (surgeries on campus and in Lancaster) or with another local GP. We also have a DENPLAN-accredited dentist and a pharmacy on campus. The Natural Health Care Centre offers complementary health treatment including acupuncture, Alexander technique, aromatherapy and reflexology.

## Registry

[www.lancaster.ac.uk/sbs/registry](http://www.lancaster.ac.uk/sbs/registry)

Staff can provide assistance with academic record matters, registration, module enrolment, academic review and appeals and provide student status letters.

## Visa and immigration

[www.lancaster.ac.uk/sbs/international](http://www.lancaster.ac.uk/sbs/international)

Our Visa and Immigration team can help with pre-arrival needs, cultural adjustment, visa information, social activities, financial issues, debt problems and working in the UK.

## Chaplaincy Centre

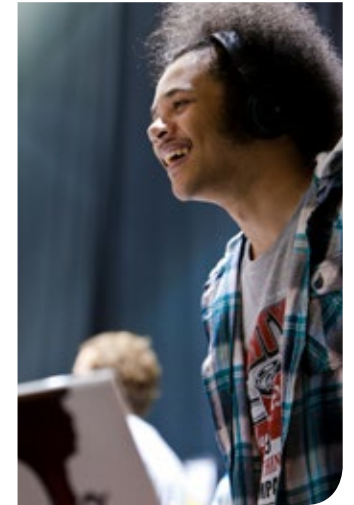
[www.lancaster.ac.uk/chaplaincy](http://www.lancaster.ac.uk/chaplaincy)

The Chaplaincy Centre is a place where you can pray and worship, reflect and contemplate, explore faith issues and ask questions. You can also come to meet others and find support and encouragement.

## Lancaster University Islamic Society

[www.isoc.lusu.co.uk](http://www.isoc.lusu.co.uk)

At Lancaster University there is an Islamic prayer room, with 24/7 open access and a well-established Islamic Society with close ties to the International Societies. The Society organises a number of activities for Intro Week to help integrate students into the community. It has a large and diverse community with a variety of events held throughout the year, such as BBQs, Charity week and end of term dinners.



## Pre-School Centre

[www.lancaster-preschoolcentre.co.uk](http://www.lancaster-preschoolcentre.co.uk)

With outstanding Ofsted reports, fully qualified staff and 158 places split between three age groups – three months to two years, two to three years and three to four years – the Pre-School Centre is here to provide high quality childcare and early education in support of students and staff with young children. Whilst fees are charged, we can advise you on how to claim back some of the costs.

## The Students' Union (LUSU)

[www.lusu.co.uk](http://www.lusu.co.uk)

Lancaster University Students' Union is dedicated to one big vision – inspiring and supporting you to love Lancaster.

We provide representation, advice, services, and opportunities for students and ensure that students' voices are heard within the University. And of course, we're here to help you expand your social network.

There are many ways for postgraduates to get involved – from attending our forums to becoming a departmental academic representative; it's a good way of meeting people and developing skills. You can also be involved by standing for an elected position on the Postgraduate Board, run jointly by LUSU and Graduate College.

LUSU Education and Support is part of the Union which works to support students at Lancaster University and its partner institutions across the globe. The service is solely for the benefit of students; it is central to representing and promoting the interests of both individual students and the student body as a whole.

LUSU Education and Support has a professional and experienced team of staff and officers who provide students with free, independent and confidential advice. Members of our team have their own areas of expertise, however, any of our advisers will be able to deal with any issues you may have. We can help solve problems you may face as a postgraduate student, including academic, accommodation, welfare, money, consumer and employment issues.

## LUSU advice and support

[www.lusu.co.uk/services/advice-support](http://www.lusu.co.uk/services/advice-support)

LUSU also has a specialist team of advisers with expertise in supporting postgraduates with educational issues. We offer guidance and support regarding your rights and responsibilities and can help with a broad range of issues from research students' supervision to taught students' teaching provision.

## LUSU opportunities

[www.lusu.co.uk/get-involved](http://www.lusu.co.uk/get-involved)

LUSU offers worthwhile and interesting volunteering and enterprise opportunities to students such as helping in schools and community organisations, working with museums and charities or volunteering with young offenders. Green Lancaster is another initiative in which you can volunteer to make a positive difference to the environment and gain valuable transferrable skills in the process. Many of our events are run at the weekend so that you can fit your participation around your studies.

LUSU can also support you in becoming an entrepreneur if you are thinking of setting up your own business. We can help turn your ideas into reality with start-up-funds and links to business professionals.

Our international opportunities are about much more than a simple 'exchange' with our partner institutions around the world. You'll gain a real understanding of the country you visit by volunteering on established projects, meeting with local government, networking with major corporate companies and learning about important international issues from leading academics.



# It's all on campus...

Our 360 acre site has all the facilities you will need throughout your student life at Lancaster.

## What you will find on campus



Eco-accommodation



Bookshop



Bank



Post office



Hairdresser



Supermarket



Bakery



Ice cream parlour



Travel agent



Charity shop



Restaurants



Bars



Chaplaincy



Doctors



Cinema



Dentist



Pharmacy



Gallery



Theatre



Petrol station





# Finance and funding



## Living costs and budgeting

While living expenses vary depending on your lifestyle and needs, rents and some living expenses do tend to be lower at Lancaster than in some urban centres.

There are a variety of financial awards at Lancaster for which you may be eligible to apply. Awards are strictly limited and you must make provision to meet all your study related costs for the duration of your course.

Please see  
[www.lancaster.ac.uk/  
pgfunding](http://www.lancaster.ac.uk/pgfunding)



Staff in Student Services and the Students' Union can provide practical advice on funding, budgeting and debt.

For guidance on student living costs and an interactive budget planner, please visit  
[www.lancaster.ac.uk/  
sbs/funding/  
costsandbudgeting](http://www.lancaster.ac.uk/sbs/funding/costsandbudgeting)



## Fees for postgraduate study

All candidates should ensure that they have access to sufficient funds to cover living expenses and tuition fees across the duration of their studies. During the online pre-registration process you will be required to agree to pay your tuition

fees when they become due, or to provide evidence that the fees will be paid by another person or organisation.

The annual tuition fee covers registration, tuition and examination. It does not include residential accommodation, living expenses, or charges for re-examination. All fees may be revised and as much notice as possible will be given of any changes.

All fees (both standard and non-standard) are likely to increase annually.

2016–17 fees will be announced in the autumn of 2015 and will be published on the University website at [www.lancaster.ac.uk/  
pgfees](http://www.lancaster.ac.uk/pgfees)



## Funding and awards

At first sight, finding sources of financial support might seem daunting. However, with the advice and guidance you'll receive from our staff, both at University level and within faculties and departments, you can be assured that we'll do our utmost to help you in your applications for funding.

We recommend that you start planning the financing of your studies 12–18 months in advance of your programme start date, as some external awards will have application deadlines this early in the process.

Additional sources of funding are available, especially for specific programmes and for students from particular countries/regions.

We are currently offering an Alumni Loyalty Scholarship to all our Alumni, regardless of their nationality or year of graduation. You do not need to apply for this scholarship; you will qualify automatically if you meet the eligibility criteria and the course entry requirements.

For detailed listings of awards available at Lancaster, and for information about how to apply for them, please see [www.lancaster.ac.uk/  
pgfunding](http://www.lancaster.ac.uk/pgfunding)



## Charities, trusts and other general funders

A wide variety of charitable and other organisations have funds they make available to intending postgraduate students at both masters and PhD level. The amounts they make available as grants range from £500 to several thousand pounds. Most award the funding on a competitive basis, and have criteria related to either academic excellence or financial need. Many have additional criteria related to the wider charitable aims of the organisation.

Their application deadline dates, and application processes are very varied and some have a number of different deadlines at times throughout the year.





# Applying to Lancaster

Our aim is to make the application process as simple and efficient as possible for you. We would encourage you to apply online using the My Applications website at: [www.lancaster.ac.uk/postgraduate-applications](http://www.lancaster.ac.uk/postgraduate-applications)

## Using My Applications to apply

Using your account on the My Applications website, you are able to submit applications for the postgraduate programme(s) which you wish to study, and upload supporting documentation. You can apply for most programmes using My Applications. Some programmes, however, require application through a different route, for example the Doctorate in Clinical Psychology (DClinPsy) and the PgDip/MA in Social Work. If you cannot find the programme for which you wish to apply listed in My Applications, please refer to our website for further information, or contact one of our Faculty Admissions teams.

## What do I need to include with my application?

If you use the My Applications website then you will be advised which documentation you need to upload or send to us. We can automatically contact your referees once you have submitted your application, if you ask us to.

The supporting documentation screen will provide you with a list of required documents. These will usually include:

- Degree certificates and transcripts of previous higher education (college/university) degrees or other courses that you have completed/for which you are currently studying. Note that, for transcripts in languages other than English, a certified English translation will be required
- Personal Statement
- Research proposal (for research degrees)
- References
- For those for whom English is not their first language, copies of English language test results

## Current Lancaster students

If you are a current Lancaster student, or you have recently graduated from Lancaster, we can reduce the amount of information that you will need to provide as part of your application. You will need to provide only one reference and will not need to supply your Lancaster degree transcript. We will also pre-fill your personal details, ready for you to check.

## Other ways to apply

If you are unable to use our online application service, please contact the appropriate Faculty Admissions Office for your intended programme of study.

### Arts, Humanities and Social Science programmes

Postgraduate Admissions  
Faculty of Arts and Social Sciences  
Lancaster University  
Lancaster LA1 4YL  
Tel: +44 (0)1524 510880  
Email: [fass-pg-admissions@lancaster.ac.uk](mailto:fass-pg-admissions@lancaster.ac.uk)

### Business and Management (LUMS) programmes

Postgraduate Admissions  
Management School  
Lancaster University  
Lancaster LA1 4YX  
Tel: +44 (0)1524 510733  
Email: [lumspostgraduate@lancaster.ac.uk](mailto:lumspostgraduate@lancaster.ac.uk)

### Science, Engineering and Technology programmes

Postgraduate Admissions  
Faculty of Science and Technology  
Lancaster University  
Lancaster LA1 4YW  
Tel: +44 (0)1524 593795  
Email: [fst-pg-admissions@lancaster.ac.uk](mailto:fst-pg-admissions@lancaster.ac.uk)

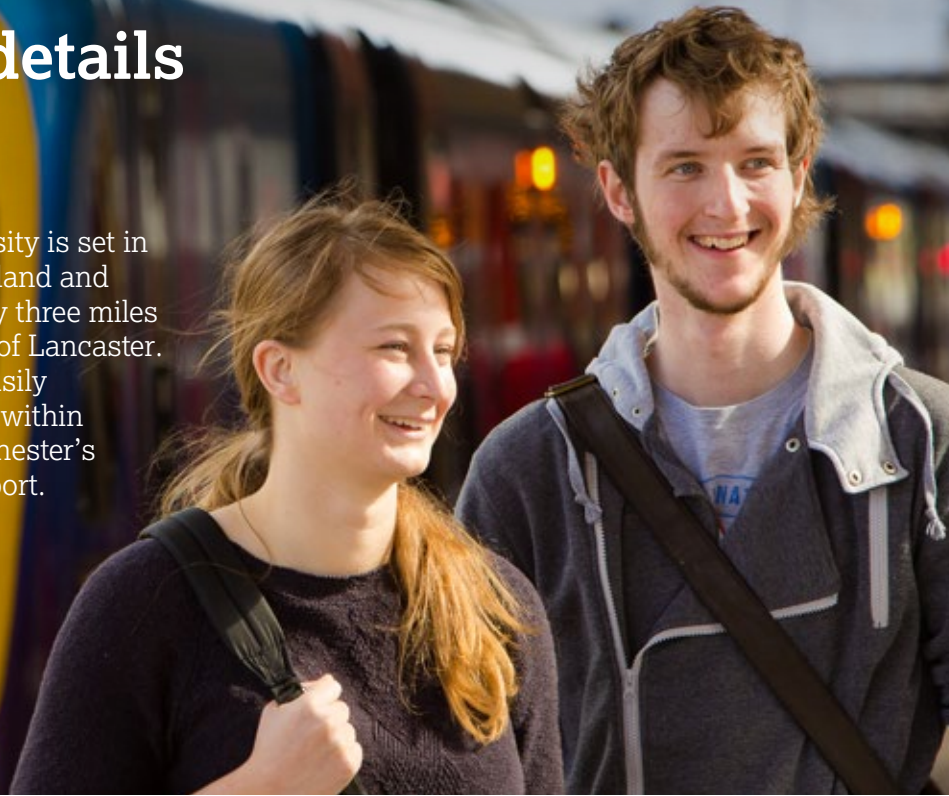
### Health and Medicine programmes

Postgraduate Admissions  
Faculty of Health and Medicine  
Lancaster University  
Lancaster LA1 4YG  
Tel: +44 (0)1524 593936  
Email: [fhm-pg-admissions@lancaster.ac.uk](mailto:fhm-pg-admissions@lancaster.ac.uk)



# Travel details

Lancaster University is set in 360 acres of parkland and lies approximately three miles south of the City of Lancaster. The campus is easily accessible and is within 70 miles of Manchester's International Airport.



## DID YOU KNOW?



CAMPUS IS SET IN 360 ACRES OF PARKLAND



LOCATED THREE MILES SOUTH OF THE CITY OF LANCASTER



WITHIN 70 MILES OF MANCHESTER'S INTERNATIONAL AIRPORT



## By car

Leave the M6 motorway at junction 33 and take the A6 north towards Lancaster.

For Lancaster University main campus – turn right at the third set of traffic lights on the A6 into the University main drive.



## Car parking

Visitor car parking is available on campus 24/7 and is free after 6pm and at weekends.

If you're visiting the campus during the day then parking charges do apply and can be purchased from any of the pay and display machines across campus at a cost of £2 for two hours or £5 for a full day. Chip and pin card payment facilities are available at most machines. Alternatively, all-day visitor scratch cards are available from the cashiers' desk in University House priced at £5 each.



## By air

From Manchester International Airport take the M56 motorway at junction 5 and join the M6 motorway at junction 20 (north) then follow the directions 'By Car'. An hourly rail link runs between the airport and Lancaster.



## By rail

There are direct rail links between Lancaster and many of the UK's major cities and airports. The 3A bus service runs every 30 minutes from the University to Lancaster Railway (service X4 is hourly on term-time Sundays). Taxis are available at the station, which is a five minute walk from the city centre.

TAXI

## By taxi

Taxi services are available from the rail and bus stations and can be contacted on:

01524 32090  
01524 35666  
01524 848848

Taxi ranks are also located on campus.



## By bus

### In the City:

The bus station is situated on Damside Street in the City Centre. Buses (services 2, 2A, 3, 4, 41, 42) leave for the University every five minutes on weekdays and most services also stop at Common Garden Street. Additionally, the 3A bus service runs every 30 minutes between Lancaster Railway Station and the University (service X4 is hourly on term-time Sundays).

2 2A 3 3A  
X4 4 41 42

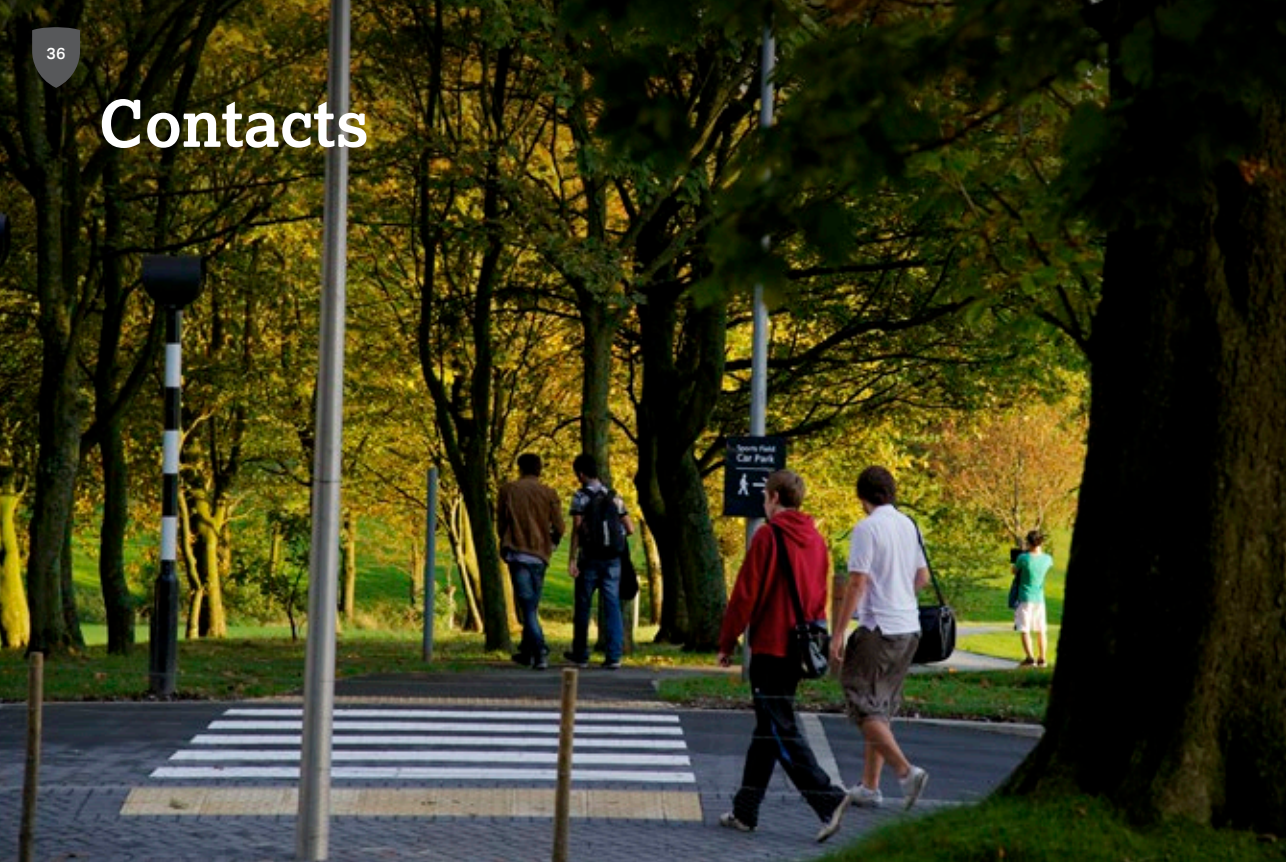
### On Campus:

All buses drop off and collect passengers in the underpass, situated underneath Alexandra Square. Additionally, services 3, 4, 41 and 42 serve the southern perimeter road around Alexandra Park. There is also a bus stop directly outside the Sports Centre on the main drive.

3 4 41 42



# Contacts



## Postal Address

Lancaster University  
Lancaster LA1 4YW  
Tel: +44 (0)1524 65 201  
[www.lancaster.ac.uk](http://www.lancaster.ac.uk)



## Arts, Humanities and Social Science Programmes

Postgraduate Admissions  
Faculty of Arts and Social Sciences  
Lancaster University  
Lancaster LA1 4YL  
Tel: +44 (0)1524 510880  
Email: [fass-pg-admissions@lancaster.ac.uk](mailto:fass-pg-admissions@lancaster.ac.uk)



## Business and Management (LUMS) Programmes

Postgraduate Admissions  
Management School  
Lancaster University  
Lancaster LA1 4YX  
Tel: +44 (0)1524 510733  
Email: [lumspostgraduate@lancaster.ac.uk](mailto:lumspostgraduate@lancaster.ac.uk)



## Science, Engineering and Technology Programmes

Postgraduate Admissions  
Faculty of Science and Technology  
Lancaster University  
Lancaster LA1 4YR  
Tel: +44 (0)1524 593795  
Email: [fst-pg-admissions@lancaster.ac.uk](mailto:fst-pg-admissions@lancaster.ac.uk)



## Health and Medicine Programmes

Postgraduate Admissions  
Faculty of Health and Medicine  
Lancaster University  
Lancaster LA1 4YN  
Tel: +44 (0)1524 593936  
Email: [fhm-pg-admissions@lancaster.ac.uk](mailto:fhm-pg-admissions@lancaster.ac.uk)





# Course listings

## Arts, Humanities and Social Sciences

Course Title	Degree
Advanced Social Work	MA/PgDip/ PgCert
Applied Linguistics and Languages Teaching	MA
Applied Linguistics (by Thesis and Coursework)	MPhil/PhD
Applied Social Science	PhD
Art	PhD
Art by Research	MA
Bioethics and Medical Law	LLM/MA
Child Welfare	MRes
Child Welfare Practice	PgCert
Conflict Resolution and Peace Studies	MA
Conflict, Development and Security	MA
Contemporary Arts	PhD
Contemporary Arts Consultancy	MA
Creative Writing	MPhil/PhD
Creative Writing	MA
Creative Writing (Distance Learning)	MA
Design	PhD
Design by Research	MA
Design Management	MA
Diplomacy and Foreign Policy	MA
Diplomacy and International Law	LLM/MA
Diplomacy and International Law (by Distance Learning)	LLM/MA
Diplomacy and International Relations (by Distance Learning)	LLM/MA
Diplomacy and Religion	MA
Discourse Studies	MA
Education and Social Justice (online, thesis and coursework)	PhD

Course Title	Degree
Educational Research (Independent Study)	MPhil/PhD
Educational Research - Higher Education	PhD
English Language (by Distance)	MA
English Language and Literary Studies	MA
English Literary Research	MA
English	MPhil/PhD
English Literary Studies	MA
Environment and Law	LLM/MA
Environment and Society	PhD
Environment, Culture and Society	MA
E-Research and Technology Enhanced Learning	PhD
European Languages and Cultures	MPhil/PhD
Film	PhD
Film Studies by Research	MA
Gender and Women's Studies	PhD
Gender and Women's Studies	MA
Gender and Women's Studies and English	MA
Gender and Women's Studies and Sociology	MA
Higher Education: Research, Evaluation and Enhancement	PhD
History	MPhil/PhD
History	MA
Human Rights and the Environment	LLM/MA
International Business and Corporate Law	LLM
International Human Rights and Terrorism Law	LLM
International Human Rights Law	LLM
International Innovation	MSc
International Law	LLM

Course Title	Degree
International Law and International Relations	LLM/MA
International Relations	MA/MRes
Language and Linguistics	MA
Language Testing (by Distance)	MA
Languages and Cultures (by Research)	MA
Law	MPhil/PhD
Law	LLM/PgDip
Law (by Research)	LLM
Linguistics (by Research Only)	PhD
Media and Cultural Studies	PhD
Media and Cultural Studies	MA
Philosophy	MPhil/PhD
Philosophy	MA/PgCert
Philosophy and Religion	MA
Political Theology for Peace (Distance)	PgCert of Achievement
Politics	MA
Politics	MPhil/PhD
Politics and International Relations	PgCert
Politics and Philosophy	MA
Politics, Philosophy and Management	MA
Politics, Philosophy and Religion	MA
Quaker Studies	PgCert
Quakerism in the Modern World	MA
Religion and Conflict	MA
Religious Studies	MPhil/PhD
Religious Studies	MA/PgCert

Course Title	Degree
Religious Studies (Distance Learning)	PgCert
Science Studies	PhD
Social Work	MA/PgDip
Social Research	MA
Sociology	PhD
Sociology	MA
Sound by Research	MA
Teaching English to Speakers of Other Languages (TESOL, by distance)	MA
Theatre Studies	PhD
Theatre and Performance by Research	MA
Translation	MA

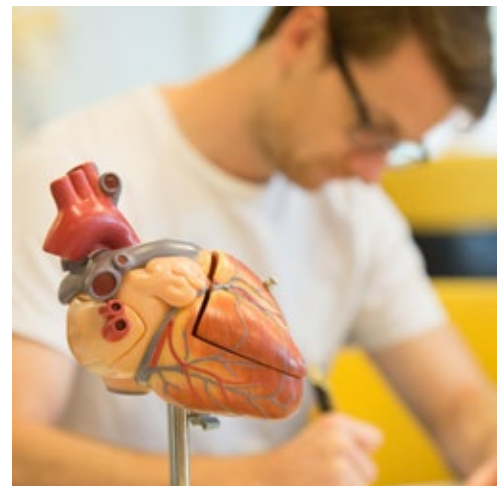




# Course listings

## Health and Medicine

Course Title	Degree
Applied Bioscience and Business Management	PgCert
Biomedical and Life Sciences	MPhil/PhD
Biomedical Science (by Research)	MSc
Biomedicine	MD
Biomedicine	MSc
Clinical Psychology	DClinPsy
Clinical Research	MSc/PgCert
Health Research	MPhil/PhD
Innovation and Improvement Science	MSc/PgDip/ PgCert
Leadership and Management	PgCert
Leadership and Management (Health Care)	PgCert
Medical Education	MSc/PgDip/ PgCert
Medical Leadership	MSc/PgDip/ PgCert
Medical Sciences (by Research)	MSc
Medicine	MPhil/PhD
Medicine	MD
Mental Health	PhD
Organisational Health and Well-Being	PhD
Organisation Development	PgCert
Palliative Care	PhD
Professional Development	PgCert
Professional Practice	MSc/MA/PgDip/ PgCert
Public Health	PhD
Statistics and Epidemiology	PhD







# Course listings

## Lancaster University Management School

Course Title	Degree	Course Title	Degree
Accounting and Finance	PhD	Leadership Practice and Responsibility	PgDip
Accounting and Financial Management	MSc	Logistics and Supply Chain Management	MSc
Advanced Financial Analysis	MSc	Management	PhD
Advanced Marketing Management	MSc	Management	MSc
Advanced Marketing Management	MRes	Management Learning and Leadership	PhD
Business Administration - Executive mode	MBA	Management Science	PhD
Business Administration - Full-time mode	MBA	Management Science	MRes
E-Business and Innovation	MSc/PgDip	Management Science and Marketing Analytics	MSc
Economics	PhD	Marketing	PhD
Economics	MSc	Marketing	MSc
Entrepreneurship, Innovation and Practice	MSc	Money, Banking and Finance	MSc/MRes
Finance	MSc	Operational Research and Management Science	MSc
Human Resources and Knowledge Management	MSc	Organisation, Work and Technology	PhD
Human Resources and Consulting	MA	Politics, Philosophy and Management	MSc
Information Technology, Management and Organisational Change (ITMOC)	MRes	Project Management	MSc
Information Technology, Management and Organisational Change (ITMOC)	MSc	Quantitative Finance	MSc
International Business and Strategy	MSc	Statistics and Operational Research in Partnership with Industry (STOR-I)	PhD/MRes
International Innovation	MSc		
International Innovation (Computer Science)	MSc		
International Innovation (Design)	MSc		
International Innovation (Engineering)	MSc		
International Innovation (Entrepreneurship)	MSc		
International Innovation (Environmental Science)	MSc		
International Innovation (Telecommunications)	MSc		
International Masters in Practicing Management	MA		
Leadership Practice and Responsibility	MSc		
Leadership Practice and Responsibility	PgCert		

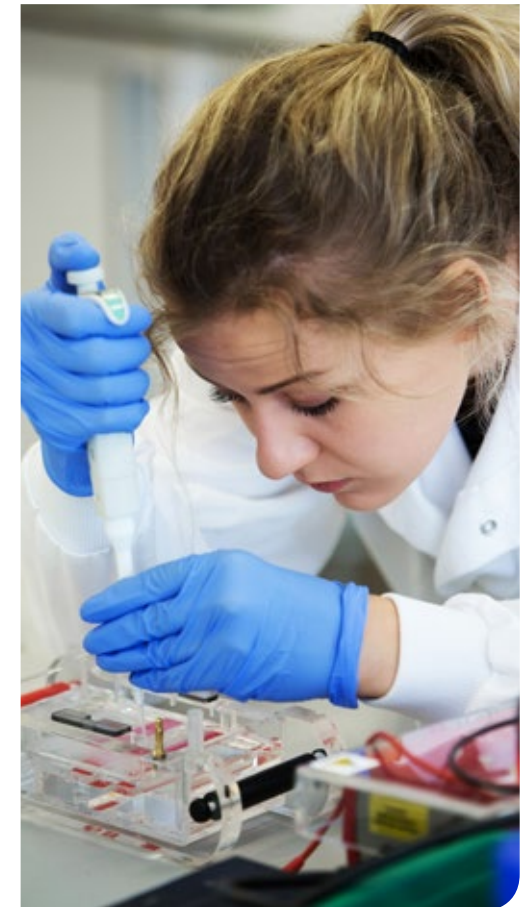


# Course listings

## Science and Technology

Course Title	Degree
Aerospace Safety Engineering	PgCert
Applied Social Statistics (NWDTG)	PhD
Biological Science	PhD
Chemistry (by Research)	PhD
Chemistry	MSc
Communication Systems	PhD
Communication Systems (by Research)	MSc
Computer Science	MSc
Computer Science	PhD
Computer Science (by Research)	MSc
Contamination, Risk Assessment and Remediation	MSc
Cyber Security	MSc
Data Science	MSc
Data Science for the Environment	MSc
Developmental Disorders	MSc
Developmental Psychology	MSc
Ecology (by Research)	MSc
Ecology and Conservation	MSc
Electronic Engineering	MSc
Energy and the Environment	MSc
Engineering	PhD
Engineering (by Research)	MSc
Engineering Project Management	MSc
Environment and Development	MA /MSc
Environment and Law	LLM/MA
Environmental and Biochemical Toxicology	MSc
Environmental Management and Consultancy	MA
Environmental Science	PhD
Environmental Science (by Research)	MSc
Environmental Science and Technology	MSc
Food Challenges for the 21st Century	PgCert
Geography	PhD

Course Title	Degree
HighWire	PhD/MRes
Human Rights and the Environment	LLM/MA
International Innovation (Computer Science)	MSc
International Innovation (Engineering)	MSc
International Innovation (Environmental Science)	MSc
International Innovation (Telecommunications)	MSc
Mathematics	PhD
Mechanical Engineering	MSc/PgDip
Mechanical Engineering with Project Management	MSc
Nanoscience	PhD
Natural Sciences	PhD
Nuclear Science and Engineering	PgCert
Physics	PhD
Physics (by Research)	MSc
Plant Sciences (by Research)	MSc
Psychological Research Methods	MSc
Psychology	PhD
Psychology of Advertising	MSc
Quantitative Methods for Science, Social Science and Medicine	MSc/PgDip/PgCert
Resource and Environmental Management	MSc
Safety Engineering (Industry-based)	MSc/PgDip/PgCert
Social Psychology	MSc
Statistics	PhD
Statistics	MSc/PgDip
Statistics and Operational Research (STOR-i)	PhD/MRes
Sustainable Agriculture and Food Security	MSc
Sustainable Water Management	MSc/PgCert
Volcanology and Geological Hazards	MSc
Wireless Communication Systems	MSc





---

# Postgraduate Open Day

---

- Find out about funding and postgraduate study at Lancaster
- Talk through your options with our academic and admissions staff and meet some of our students
- View our accommodation and facilities

---

**Thursday 25th February 2016**

---

For further information visit:  
[www.lancaster.ac.uk/visitus](http://www.lancaster.ac.uk/visitus)

### Disclaimer

The University makes all reasonable efforts to ensure that the information in this prospectus is correct at the time of printing (September 2015).

Please see [www.lancaster.ac.uk/compliance/legalnotice](http://www.lancaster.ac.uk/compliance/legalnotice) for further information.





---

Lancaster University, Lancaster, LA1 4YW  
T: +44 (0)1524 65201  
**[lancaster.ac.uk](http://lancaster.ac.uk)**

---